



SPECIAL VEHICLES

For operation in communities and industry



PUMP WATER TENDER 2-AXLE-TYPE

HTLF 3000

Mercedes-Benz Axor 1833 L

Pump water tenders are more than 'water carrier' – they support great fire operations in the urban, rural or industrial environment. Thanks to their additional equipment they are always multifunctionally usable.

- 1. Water tank: 3.000 l
Foam tank: 200 l
Mixing with Z-Proportioner
which can be coupled
- 2. Pump:
ZIEGLER FPN 10-3.000-1H
- 3. Cold cutting system
coldcut™ C360 CLS with
hydraulic drive of the 2nd PTO
- 4. ZIEGLER Z-Cab,
1 + 5 Crew
- 5. Chassis
Mercedes-Benz Actros
240 kW, 326 HP at 2.200 rpm



PUMP WATER TENDER TWO-AXLE-TYPE



■ **HTLF 3000**
Mercedes-Benz Axor 1833L 4x2

In addition to 3.000 l water, the vehicle has 200 litres of foam on board. Mixing is made via two Z-Proportioners which can be coupled. A hydraulically-operated cold cutting fire extinguishing system allows the penetration of high-resistance materials.

■ **TLF 30/50**
Mercedes-Benz Unimog U5000 4x4

The extremely rough terrain vehicle is equipped for fire fighting and salvage. In addition to a powerful pump and a roof turret it is also provided with a rope winch with a tractive force of 60 kN.



■ **PUMP WATER TENDER / TWO-AXLE-TYPE**



■ **TLF 28/50-5**
MAN TGM 18.280 4x4

For efficient output of the extinguishing agent (5.000 l water / 500 l foam) the vehicle is provided with a powerful roof turret (1.900 l/min). Thanks to all-wheel drive it is strong offroad.



■ **TLF 30/40-4**
Scania P 310 4x2

In addition to the large extinguishing agent capacity (4.000 l water / 400 l foam), efficient pump and powerful roof turret, the vehicle is individually equipped with a tank heating system.

FIRE FIGHTING VEHICLE 3-AXLE-TYPE

■ 1. ZIEGLER-BOA
Water-/Foam Roof turret
(6.000 l/min. switchable to
3.000 l/min. at 10 bar)

■ 2. Extinguishing unit
with 4.000 l water,
1.500 l + 500 l foam

■ 3. ZIEGLER Profomat-Foam
proportioning system with
proportioning rates from 0,5 %
and 500 l/min. at 16 bar,
Feed: 1 x F150 ZIEGLER-pump
FPN-10.000-1H

■ 4. TOTAL PLA 1000-kg-
powder extinguishing unit

■ 5. Rapid intervention reel
PLA power: 5 kg/sec at 30 m
hose length. Rapid intervention
hose reels are available. Colling
of the reel is done electrically via
removable pedal switch.

■ 6. ZIEGLER-VIPER
Water-/Foam-Bumper turret
(max. 1.600 l/m at 10 bar)

■ SLF 100/40-20+1000 P Volvo FM 460 6x2

The less is regulated by standards and the higher specialized
are the application profiles the more expert knowledge is needed.
We have the experience and know how to customize exactly the
fire truck that meets all your requirements.



INDUSTRIAL FIRE FIGHTING VEHICLE THREE-AXLE-TYPE



■ **ULF 30/30-10+2000 P + 120 CO₂**
MAN TGS 33.400 6x6

All components, high performance pump, proportioning unit and water/foam turret are manufactured by ZIEGLER and are perfectly adjusted to the extinguishing capacities of the vehicle (each 5.000 l water and foam).

■ **TLF 60/100-30+750 P**
Mercedes-Benz Actros 3341 6x4

Three extinguishing agents (water, foam, powder), pump and proportioning technology, two turrets. That is efficient extinguishing power.



■ **TroLF 10.000**
MAN TGS 33.440 6x4

The vehicle has a MINIMAX powder extinguishing system and a powder turret for special fire fighting operations.



■ **INDUSTRIAL FIRE FIGHTING VEHICLE / THREE-AXLE-TYPE**



■ **TroTLF 60/10-25+2000 P+150 CO₂**
MAN TGS 26.360 6x2-2

Water, foam, powder and a CO₂ unit with rapid intervention system create a real extinguishing giant. Pump and proportioning unit are appropriately powerful. Both roof turrets (water/foam or powder) can be remote-controlled. Thanks to a 80 kN rope winch assistance can be provided.



■ **TLF 30/90-5**
Mercedes-Benz Zetros 2733 6x6

A vehicle braves every fire and every terrain: It carries along its extinguishing agents (9.000 l water, 500 l foam) also safely to locations hard to reach. ZIEGLER proportioning unit provides the extinguishing power; the bumper turret with remote-control via joy-stick provides efficient operation.

■ **TLF 40/40-20**
Scania P 400 6x4

The extinguishing agent unit includes a 4.000 l water tank, as well as two foam tanks (500 l / 1.500 l). The foam is generated via a ZIEGLER-CAFS proportioning system with continuously variable admixture rate and a electrical foam proportioning pump.



FIRE FIGHTING VEHICLE 4-AXLE-TYPE

■ 1. ZIEGLER-Roof Turret:
2.000 – 8.000 l/min

■ 2. Volvo FM13 500 pk 8x4
367 kW/500 HP

■ 3. ZIEGLER
FPN 10-10.000-1H

■ 4. Fire fighting
water tank:
15.000 l

■ 5. Foam tank:
4.000 l

■ 6. Water-
Foam Bumper
turret:
400–2.000 l/min

■ SLF 100/150-40

Our special fire trucks on 4 axles offer powerful performance in operation. Giants to overcome the fire and provide quick help.



3

5

4

2

6

SPECIAL VEHICLES 4-AXLE-TYPE



■ **SLF 100/150-40**
Volvo FM13 500 pk 8x4

Not only the format, but also the power is huge of this vehicle. 15.000 l water and 4.000 l foam are carried along. The powerful pump driven from a separate pump engine has an output of 10.000 l/min at 10 bar. A front and a bumper turret put enormous pressure on the fire.

■ **TLF 100/150-30**
Mercedes-Benz Actros 4160 8x4

All components are combined into a powerful vehicle: ZIEGLER-pump (FPN 10-10.000-1H), foam pump and the roof turret. 15.000 l water and 3.000 l foam are carried along. A crew cabin is integrated.

■ **SPECIAL VEHICLE / 4-AXLE-TYPE**



■ **SLF 100/30-40**

The Volvo with emission standard Euro 6 impresses with hydraulically controlled last axle, a powerful FPN 10-10.000-1H and the new ZIEGLER-ZPF-10.000 System with a very high accuracy of proportioning of 0.5 % at 150 liters. Reel with can be hydraulically lowered has the power of 4.000 liters foam and 3.000 liters water. This completes the performance programme of this giant.



SPECIAL VEHICLE 4-AXLE-TYPE

■ EXTINGUISH ARM

Rescue of people from exposed areas, large fire, fire zones, that are hard to reach: telescopic mast platforms with firmly laid water lines allow assistance where it is difficult. This is even more important if a superstructure with additional fire fighting equipment will be combined with the telescopic mast. We have the expertise to develop such solutions: custom-made, multi functional and perfectly integrated.



■ **Extinguishing arm + Water/Foam**
ZIEGLER Bumper Turret VIPER.
Foam Proportioning unit: Fire-Dos-FD 8.000 l/min
Foam Proportioning rate: 0,5/1/2/4/5%
Extinguishing vehicle: 40 WFT with water/foam turret

■ SPECIAL VEHICLE / 4-AXLE-TYPE



■ SLF 80/85-15 F 40 WFT Mercedes-Benz Actros 3351 8x4

This combination of fire truck and telescopic platform is made for the major tasks. Around the telescopic arm ZIEGLER has installed high-performance fire fighting equipment – including water and foam tank, a pump FPN 10-8.000-1MH, as well as a FireDos proportioning unit.

RESCUE VEHICLE

■ RW-Crane MAN TGS 26.540 6x6

Rescue vehicles are the specialists of technical assistance. When a loading crane is added to the already comprehensive equipment the multi-talent will be transformed into a true all-rounder.

- 1. Three-Axle-Type-chassis
MAN TGS 26.540 6x6

- 2. Loading Crane
Lift moment 225 kNm
Supporting width 7,10 m
rear side, 3,30 m front side
Working range:
hydraulic exhaust stroke 18,6 m
Load value 920 kg at 18,6 m
Winch 19,65 kN
Swivel range 420°
with 400-V connection at the
top of the crane can be also
used as light mast

- 3. ZIEGLER
Built-in generator 50 kVA

- 4. On both sides Power and Rapid
Intervention system

- 5. 8 m lightmast with twice Metal
halide lamps 1.000 W (Main
light) and 2x LED headlights

- 6. 80kN Rotzler winch TRO80 with
double-action pull ahead and
single-action pull backwards



RESCUE VEHICLE MOBILE BIG FAN



■ RW Mercedes-Benz Atego 1529F 4x2

Reliable support for people in need of help, reduced workload for the helpers. This RW is provided with an equipment locker which can be lowered. Among other things, the vehicle is equipped with two hydraulic winches, ladder lowering, 30-kVA-hydraulic generator, as well as a light mast.



■ RW-G Mercedes-Benz Econic 2633 6x2

The tail lift of this passing workshop has 3.000 kg lifting capacity. In addition to the comprehensive load among others a screw compressor is provided.

■ RESCUE VEHICLE

■ RW-Boot Mercedes-Benz Actros 2036 4x4

With 80kN rope winch, crane and ALU multi-purpose boat stored on the roof. The PK 14.000-T Crane achieves a range of 10 m with a lifting capacity of 1.160 kg (at 10 m) and additional rope winch with 50 m rope and 1,5 t tractive power.



■ MOBILE BIG FAN

■ MGV Mercedes-Benz Atego 1324 L

The mobile big fan has an air output of 210.000 m³/h and a fog system with 12 nozzles. The lifting device can be extended up to approx. 3 m (load 1,5 t).



SPECIAL VEHICLE ELECTRIC DRIVE



■ TRV ZE1 „MERKUR“

Special applications require new technologies. Adapted to the respective environment our special vehicles provide the necessary equipment for quick response. All-rounders in the respective field of application.

- 1. 2 Driver's cabs
Automatic hydraulic center position, automatic activation of the driver's cab
- 2. Water cooled electric motors
Output power 2x76,6 kW (max. 2x95 kW)
- 3. Underbody protection with heat shield and self-protection system
- 4. CAN-Bus
Infrared camera and rear view camera
- 5. High pressure
Air cell unit (300 bar).
2x7 compressed-air-cylinders
independent operation: 4 hours
- 6. Ward off smoke in the cabin
by means of PVC curtains and overpressure

SPECIAL VEHICLE



■ **MERKUR**
Iveco EuroCargo
with electric drive

The electrical-powered, double-headed special vehicle for tunnel fires has an emergency cabin for 12 persons.



■ **SPECIAL VEHICLE**

■ **ELW**
Neoplan N44 26/3UE Trendliner

The self-contained command center is fully equipped for all tasks of the operations management, with staff room, information and communication technology. With an engine output of 260 kW and a hot water heater with 35 kW by Webasto, the helpers reach quickly and conveniently the place of action.



■ **MLF**
Mercedes-Benz Unimog U400
4x4

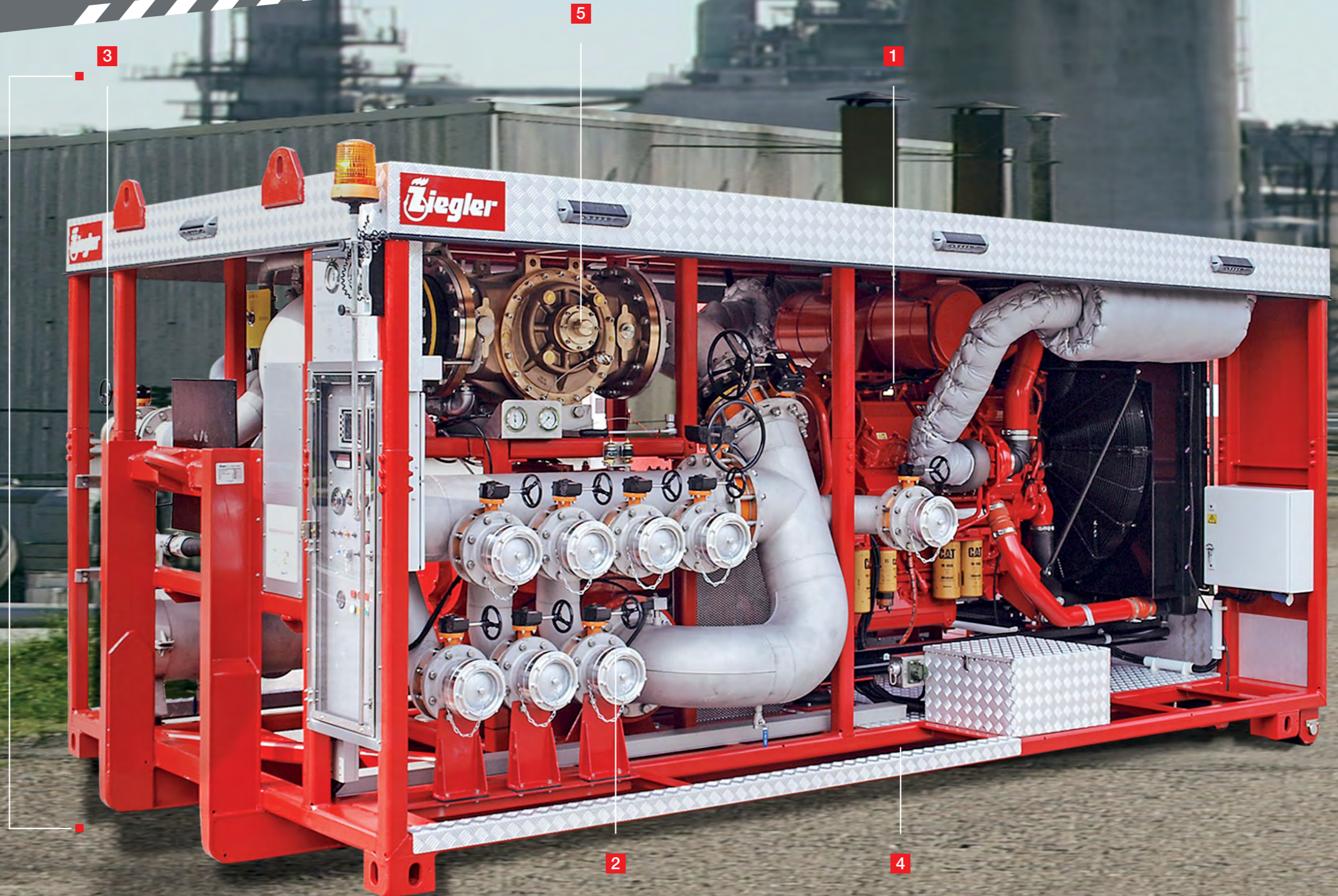
The bi-directional vehicle for road and rail is among others equipped with a CAFS proportioning unit and a roof turret.

SWAP BODIES

■ SWAP BODIES

Swap bodies are particularly adapted to operations which generally are kept ready for special interventions. The configuration is very individual and depends on the range of tactics of the respective fire department. The ZIEGLER technology is ideally suited to meet these requirements. Our Swap Body Concept ensures custom-made, exact solutions and offers almost unlimited installation possibilities.

- 1. Pump capacity:
min. 23.000 l at 12 bar Engine:
Caterpillar, Diesel with 875 HP
(653 kW), water cooled
- 2. Delivery outlets:
7xNW 150 Storz coupling
water/foam
- 3. Suction inlets: 9xNW 150 Storz
coupling for water 2xNW 80
Storz coupling for foam
- 4. Dimensions:
5200x2900x2500 mm
- 5. Foam proportioning system:
Firedos FD 20.000,
1.000 – 20.000 l/min.
Foam Proportioning rates:
0, 1, 3%



SWAP BODIES



■ Swap Body Water/Foam

Cooling for the fire: the pump, the water tank with a capacity of 6.000 l with tank heater and two foam tanks (500 l / 200 l) with electrically controlled roof turret provide the necessary cooling.

■ Swap Body High-Rise Building Fire

Accessories for fire fighting. One TS 6/6 and a generator are stored in 11 trolleys. A light mast is also provided.



■ SWAP BODIES



■ Swap Body BigFlow System

The ZIEGLER pump unit with Caterpillar engine achieves enormous volume of 22.500 l/min (10 bar). Proportioning of the foam agent from the tank which can be heated is made via an electric automatic dosage unit. The roof turret (max. 22.700 l/min 7 bar) allows a massive fire fighting attack.



■ Swap Body Boat

Equipment rooms G1/G2 by hydraulic, after below fold-out special board wall with two bearings for ever 5 rescue and flood - HWB boats 420 DB closed. In addition, the accessories are stored behind the folded boats. The equipment locker G3 and G4 are closed by doors. 3 outboard motors and other accessories are stored in this equipment locker. Further 7 outboard motors are stored in the rear panel box.

HYDRAULIC LIFTING PLATFORM

■ AERIAL Hydraulic Lifting Platform HP 48 m + 60/20-5 Mercedes-Benz Actros 3341 6 x 4

Rescue, Extinguish, Salvage, Protect. The ZIEGLER Hydraulic Lifting Platform with an hydraulic platform of 48 m combines these tasks. Additional extinguishing power by water and foam is no problem for this giant. Powerful and efficient technique to provide help on the spot where it is needed the most.



- 1. ZIEGLER Extinguishing technology: 2.000 l water / 500 l foam tank, pump FPN 10-6.000-2H, foam proportioning system MAD 50
- 2. Pump: ZIEGLER FPN 10-6.000-2H
- 3. Protection against overheating in tropical climate areas
- 4. Additional 4-stroke Diesel engine with 15,8 kW power (back-up system)
- 5. 3-axle-chassis Mercedes-Benz Actros 3341 6 x 4
- 6. 48-m-hydraulic platform
- 7. Anemometer for automatic stop when wind speed is more than 12,5 m/s

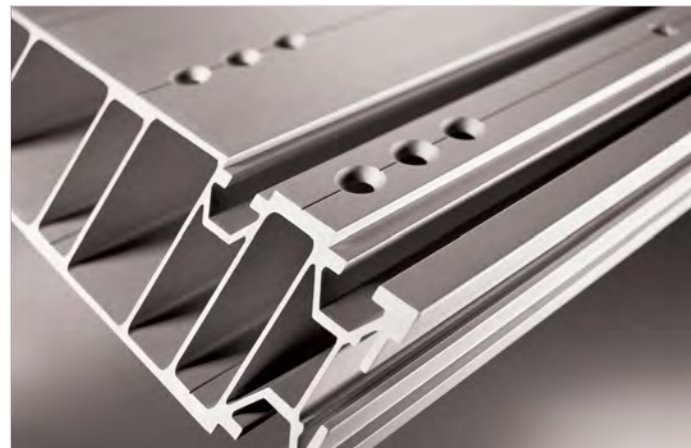
COMPONENTS

Z-Cab



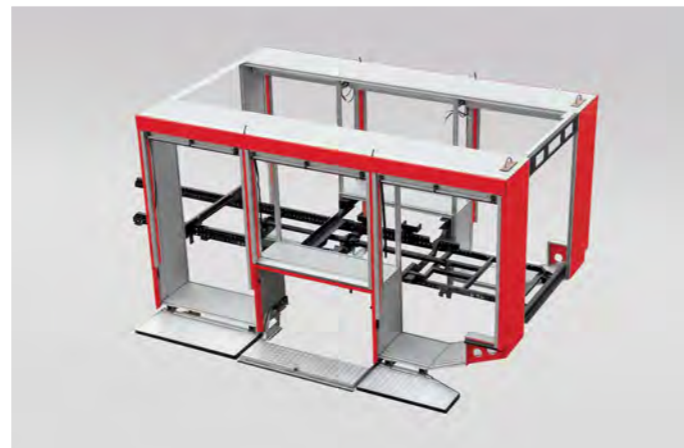
Cab

The ZIEGLER-Z-Cab New Generation sets standards for crew protection. The Z-Protect airbag and belt tensioning system protects the crew against serious injuries in the event of an accident. The flexible equipment can be adapted individually.



ALPAS

The patented ZIEGLER aluminium panel system is highly flexible, extremely (value-) stable and very durable.



ALPAS Load Ring

ALPAS structures create generous storage space around the extinguishing agent unit which can be intelligently used.

Z-Control



Z-Control

Easy to use, clear, logical, easy to understand, suitable for gloves: Z-Control meets all practical requirements.



Z-Control Pump control

On the clearly structured Z-Control panel the operator has all functions at a glance.



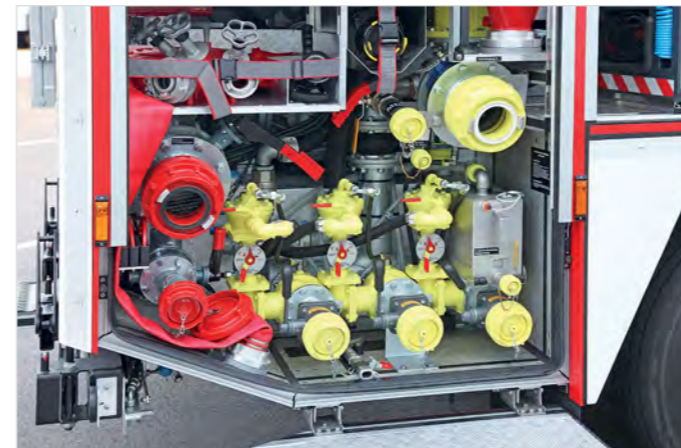
Pumps

Over 100.000 ZIEGLER centrifugal fire pumps are successfully in service worldwide.



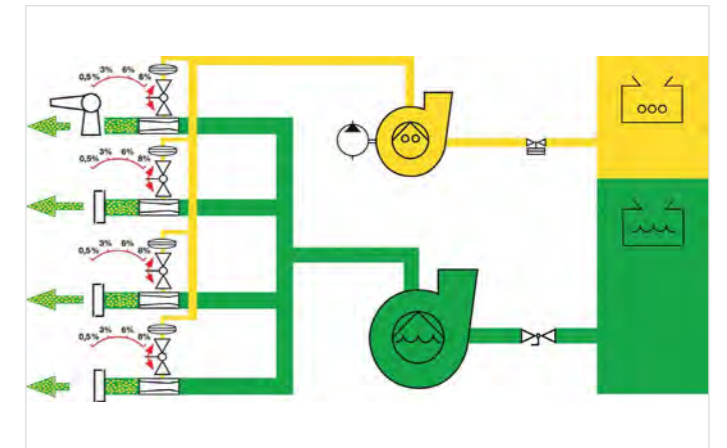
Z-Rack

Space, perfectly used: for document box, radio charger for walkie-talkies and lights as well as a helmet fixation.



Proportioning System

ZIEGLER Profomat-proportioning rates from 0,5% and 500 l/min at 16 bar.



Profomat System

For an exact proportioning of foam agent on delivery side.



SERVICE – MADE BY ZIEGLER

Extensive instruction is carried out by our specialists of different areas before initial operation of commissioning of a special vehicle. A detailed instruction will be given to our customers in our factory by our specialists of different areas. After the vehicle is handed over each of our customers can be sure that in case of need the reliable and competent ZIEGLER Service is available.

■ Worldwide guaranteed availability of our service team:

24 hours a day, 7 days a week

■ Immediate assistance via remote diagnosis

■ Skilled support specialists right after initial contact

■ Pump warranty of spare part availability over decades

■ ALPAS quality warranty

■ Optional general warranty extension for 5 years in combination with a maintenance contract

■ Refurbishment and renovation warranty

■ Local service partners



Albert Ziegler GmbH, Memminger Straße 28, 89537 Giengen/Brenz, Germany
 E-Mail ziegler@ziegler.de, Phone +49 7322 951-0, Fax +49 7322 951-211,
www.ziegler.de